



Thin-Film Cascadable Amplifier 5 to 1000 MHz

Technical Data

UTO/UTC 1006 Series

Features

- **Frequency Range: 5 to 1000 MHz**
- **High Dynamic Range**
- **High Output Power: +18.5 dBm (Typ)**
- **Noise Figure: 5.0 dB (Typ)**
- **Temperature Compensated**
- **Surface Mount Option**

Applications

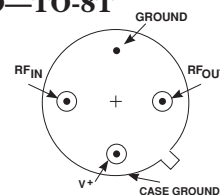
- **IF/RF Amplification**
- **Surface Mount Assembly**

Description

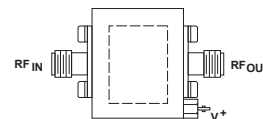
The 1006 Series is a medium-gain, thinfilm bipolar RF amplifier using resistive feedback and active bias for stability over temperature and bias variations. Inductive networks maintain good VSWR while RF is coupled through input and output blocking capacitors. The 1006 Series amplifiers are available in three packages: the surface mount hermetic PP-38 (.375 in. x .375 in.) case, the TO-8 hermetic case and the connectorized TC-1A case.

Pin Configuration

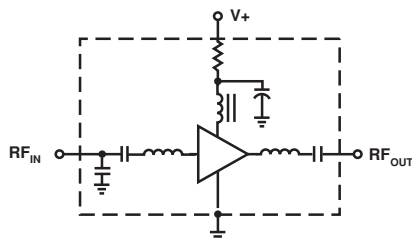
UTO—TO-8T



UTC—TC-1A



Schematic



Maximum Ratings

Parameter	Maximum
DC Voltage	+17 Volts
Continuous RF Input Power	+13 dBm
Operating Case Temperature	-55 to +100°C
Storage Temperature	-62 to +150°C
"R" Series Burn-In Temperature	+100°C

Thermal Characteristics¹

θ_{JC}	75°C/W
Active Transistor Power Dissipation	640 mW
Junction Temperature Above Case Temperature	48°C
MTBF (MIL-HDBK-217E, A_{UF} @ 90°C)	743,600 Hrs.

Weight: (typical) UTO—2.1 grams; UTC—21.5 grams

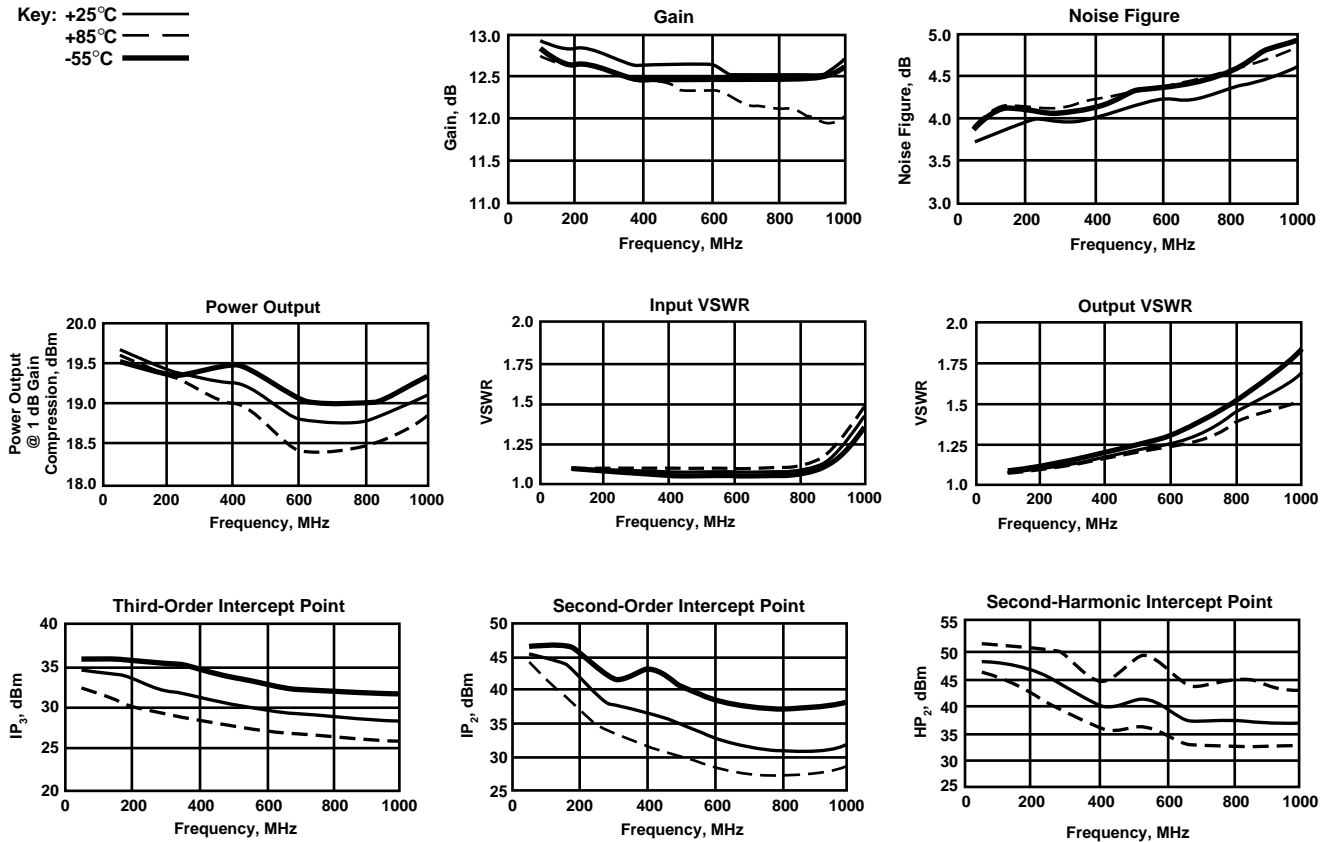
Electrical Specifications

(Measured in 50 Ω system @ +15 VDC nominal unless otherwise noted)

Symbol	Characteristic	Typical T _C = 25°C	Guaranteed Specifications		Unit
			T _C = 0 to 50°C	T _C = -55 to +85°C	
BW	Frequency Range	5-1000	5-1000	5-1000	MHz
GP	Small Signal Gain (Min.)	12.0	11.0	10.5	dB
—	Gain Flatness (Max.)	±0.3	±1.0	±1.0	dB
NF	Noise Figure (Max.)	4.8	6.0	6.5	dB
P _{1dB}	Power Output @ +1 dB Comp. (Min.)	+18.5	+17.0	+16.0	dBm
—	Input VSWR (Max.)	<1.3:1	2.0:1	2.0:1	—
—	Output VSWR (Max.)	<1.3:1	2.0:1	2.0:1	—
IP ₃	Two Tone 3rd Order Intercept Point	+27.0	—	—	dBm
IP ₂	Two Tone 2nd Order Intercept Point	+30.0	—	—	dBm
HP ₂	One Tone 2nd Harmonic Intercept Point	+36.0	—	—	dBm
I _D	DC Current	70	—	—	mA

Typical Performance Over Temperature (@ +15 VDC unless otherwise noted)

Key: +25°C —
 +85°C —
 -55°C —



Automatic Network Analyzer Measurements (Typical production unit @ +25°C ambient)

Numerical Readings
Bias = 15.00 Volts

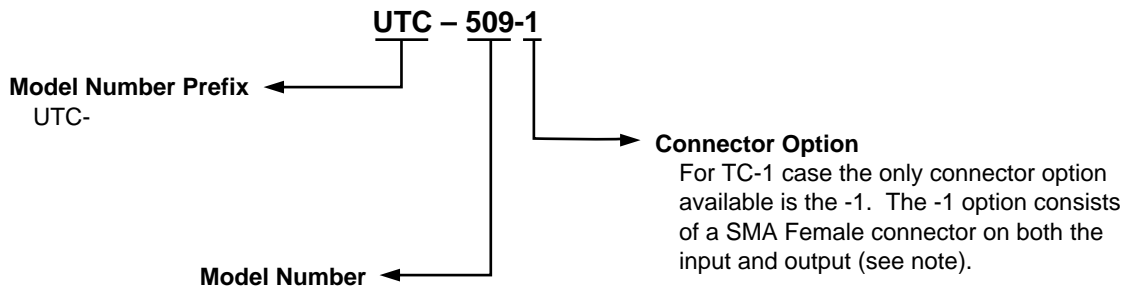
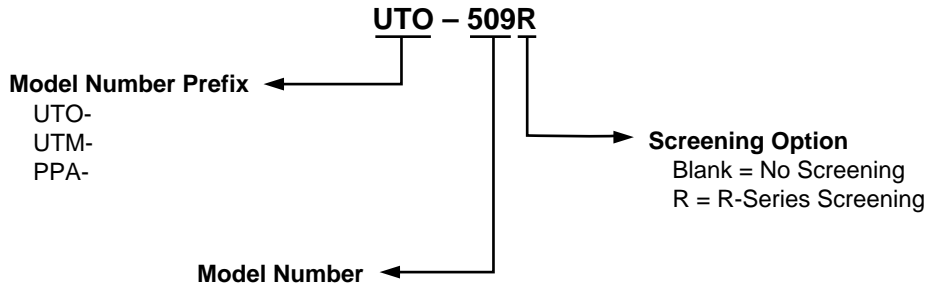
FREQUENCY MHz	VSWR IN	GAIN dB	PHASE DEGREES	PHASE DEV	GROUP DELAY ns	VSWR OUT	ISOLATION dB
100.0	1.44	12.63	170.36	-.01	.00	1.20	17.41
150.0	1.43	12.55	165.04	-.31	.29	1.20	17.30
200.0	1.42	12.46	159.97	-.35	.29	1.20	17.35
250.0	1.40	12.40	154.76	-.53	.28	1.20	17.42
300.0	1.38	12.34	149.83	-.43	.27	1.19	17.46
350.0	1.36	12.27	145.02	-.22	.27	1.18	17.51
400.0	1.34	12.20	139.96	-.25	.28	1.16	17.54
450.0	1.33	12.13	135.07	-.11	.27	1.15	17.61
500.0	1.32	12.10	130.23	.07	.27	1.12	17.59
550.0	1.31	12.12	125.50	.36	.26	1.10	17.54
600.0	1.29	12.13	120.91	.81	.26	1.07	17.47
650.0	1.27	12.11	116.24	1.17	.27	1.04	17.35
700.0	1.27	12.09	111.20	1.16	.28	1.03	17.27
750.0	1.27	12.04	106.16	1.15	.29	1.06	17.17
800.0	1.28	11.97	100.68	.69	.31	1.10	17.13
850.0	1.27	11.97	95.13	.17	.31	1.14	17.10
900.0	1.27	11.96	89.38	-.55	.32	1.19	16.94
950.0	1.28	11.96	83.76	-1.13	.31	1.24	16.95
1000.0	1.28	12.06	78.20	-1.67	.31	1.30	16.85
1050.0	1.28	11.99	72.66	—	.32	1.36	16.78
1100.0	1.29	12.03	66.85	—	.36	1.42	16.72
1200.0	1.36	11.88	52.69	—	.39	1.55	16.39
1300.0	1.58	11.73	37.09	—	.47	1.72	16.22
1400.0	2.11	11.37	18.41	—	.54	1.95	16.52
1500.0	3.20	10.30	-.79	—	.57	2.23	17.43
1600.0	5.16	8.32	-20.98	—	.51	2.61	18.99
1700.0	7.80	5.94	-38.40	—	.44	2.95	20.62
1800.0	10.73	3.46	-50.25	—	.32	3.25	22.50
1900.0	13.12	.79	-62.74	—	.30	3.60	23.46
2000.0	15.53	-1.82	-74.60	—	.00	3.76	24.62

LINEARIZATION RANGE: 100.0 to 1000.0 MHz

S-Parameters
Bias = 15.00 Volts

FREQUENCY MHz	S ₁₁		S ₂₁		S ₁₂		S ₂₂	
	Mag	Ang	dB	Ang	dB	Ang	Mag	Ang
100.00	.184	-177.8	12.616	170.2	-17.438	-1.3	.093	164.3
200.00	.174	176.9	12.453	159.9	-17.342	-2.3	.089	151.6
300.00	.161	176.3	12.369	149.6	-17.451	-3.9	.085	138.9
400.00	.152	177.7	12.265	139.9	-17.464	-6.0	.076	126.1
500.00	.143	-179.2	12.222	129.3	-17.503	-8.5	.064	110.8
600.00	.131	-172.5	12.195	119.4	-17.384	-11.6	.046	98.9
700.00	.142	-162.1	12.085	109.4	-17.275	-14.6	.017	79.6
800.00	.142	-156.6	11.907	98.8	-17.171	-17.5	.022	-90.5
900.00	.141	-149.4	11.869	87.2	-17.050	-21.6	.069	-108.1
1000.00	.154	-138.0	11.954	76.0	-16.956	-24.6	.126	-121.5
1100.00	.159	-124.6	11.904	84.2	-16.872	-29.7	.186	-137.4
1200.00	.185	-108.7	11.761	49.3	-16.509	-36.6	.243	-158.5
1300.00	.258	-93.3	11.526	32.6	-16.393	-45.8	.306	172.1
1400.00	.398	-90.1	11.044	12.7	-16.885	-60.1	.370	136.0
1500.00	.572	-96.1	9.645	-7.7	-18.062	-75.1	.432	96.5
1600.00	.711	-107.1	7.102	-29.2	-20.192	-87.9	.491	60.7
1700.00	.786	-119.3	3.672	-46.4	-22.673	-95.7	.531	31.7
1800.00	.786	-133.4	-.551	-56.2	-26.297	-92.6	.556	6.9
1900.00	.363	-136.6	-.896	-23.7	-25.231	-54.9	.532	-14.4
2000.00	.788	-112.6	-.753	-65.2	-23.488	-89.8	.562	-26.9

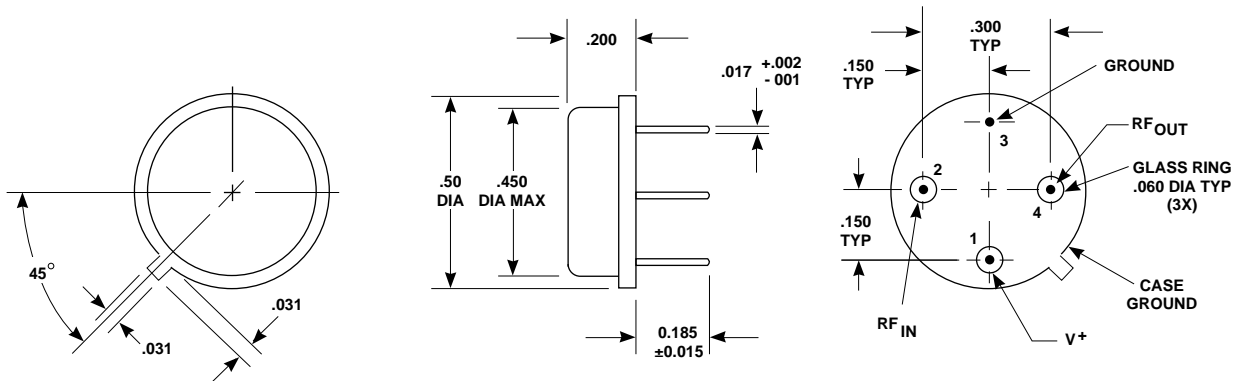
Product Options



Note: R-Series screening is not available in the TC-1 case as the case is non-hermetic.

Case Drawings

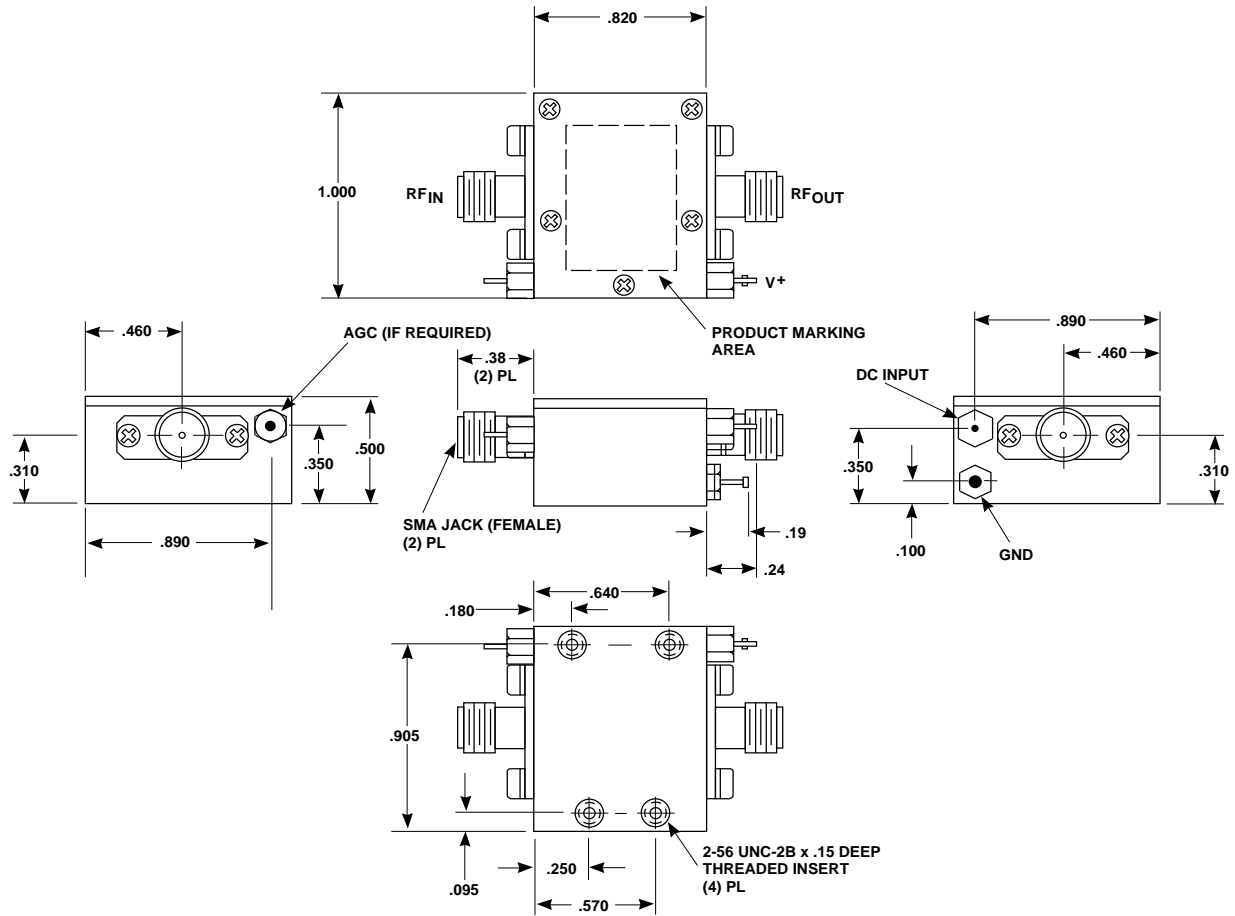
TO-8T



APPROXIMATE WEIGHT 2.1 GRAMS

- NOTES (UNLESS OTHERWISE SPECIFIED):
1. DIMENSIONS ARE SPECIFIED IN INCHES
 2. TOLERANCES: xx ± .02
xxx ± .010

Case Drawings TC-1



TYPICAL WEIGHT WITH CONNECTORS = 21.5 GRAMS

- NOTES: 1. THE TC-1 CASE IS A NON-HERMETIC CASE.
2. THE ONLY CONNECTOR OPTION AVAILABLE FOR THE TC-1 CASE IS THE -1, SMA FEMALE CONNECTORS AT BOTH INPUT AND OUTPUT PORTS.

- NOTES (UNLESS OTHERWISE SPECIFIED):
1. DIMENSIONS ARE SPECIFIED IN INCHES
2. TOLERANCES: xx ± .02
xxx ± .010

Contact Teledyne Microwave Solutions:
650-691-9800
650-962-6845 fax

Check for updates:
www.teledynemicrowave.com