

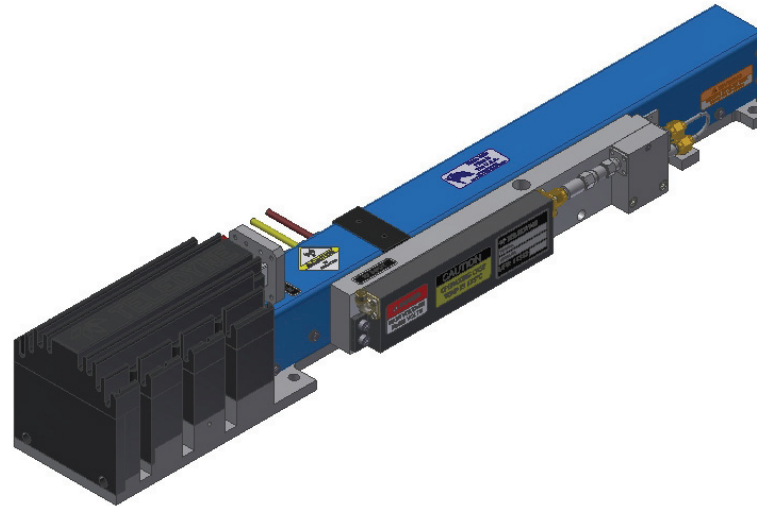
MEC 5411/MEC 5412

Continuous Wave TWT

6.5 GHz – 18.0 GHz

- 300 W Minimum Power
- 6.5 to 18.0 GHz
- -40° to 85° C
- 1221 W Typ. Prime Power
- 35-45 dB Typical Gain
- 19.8" L x 3.47" W x 3.4" H (50.3 x 8.8 x 8.64 cm)
- ±20° Phase Match

5411 – Grid
5412 – Focus Electrode (FE)



Typical Operating Conditions Element	Voltage	Current	Power Supply Requirements		
			Voltage Min.	Voltage Max.	Current Max.
Heater	-6.3 Vdc	1.6 A	-6.0 Vdc	-6.6 Vdc	2 A
Helix					
with RF	Ground	8 mA	Ground	Ground	15 mA
without RF	Ground	2 mA	Ground	Ground	15 mA
FE On	-25 Vdc	0.1 mA	0	-75 Vdc	1 mA
FE Off	-1300 Vdc	0.1 mA	-1500 Vdc	-1700 Vdc	1 mA
Grid On	200 Vdc	1 mA	125 Vdc	250 Vdc	10 mA
Grid Off	-200 Vdc	0.1 mA	-200 Vdc	-500 Vdc	1 mA
Cathode (E _k)	-10.3 kV	290 mA	-10 kV	-10.5 kV	300 mA
Collector w/RF					
Coll. #1	5.36 kV	50 mA	52% x E _k ±2%		100 mA
Coll. #2	3.71 kV	232 mA	36% x E _k ±2%		300 mA

Cathode voltage is measured with respect to ground.
Heater, Collector, and Grid or Focus Electrode (FE) voltages are measured with respect to Cathode.

RF Performance

Freq (GHz)	Typ. Sat. Power Output (W)	Min. Spec. Power Output (W)	Typ. Gain @ Spec. Power (dB)
6.5	310	300	35
7.0	325	300	38
8.0	350	300	41
9.0	350	300	43
10.0	325	300	45
11.0	350	300	45
12.0	375	300	45
13.0	375	300	45
14.0	375	300	45
15.0	365	300	43
16.0	350	300	41
17.0	340	300	38
18.0	325	300	35

Typical power output is shown to illustrate capability.
Typical gain shown is without equalizer.

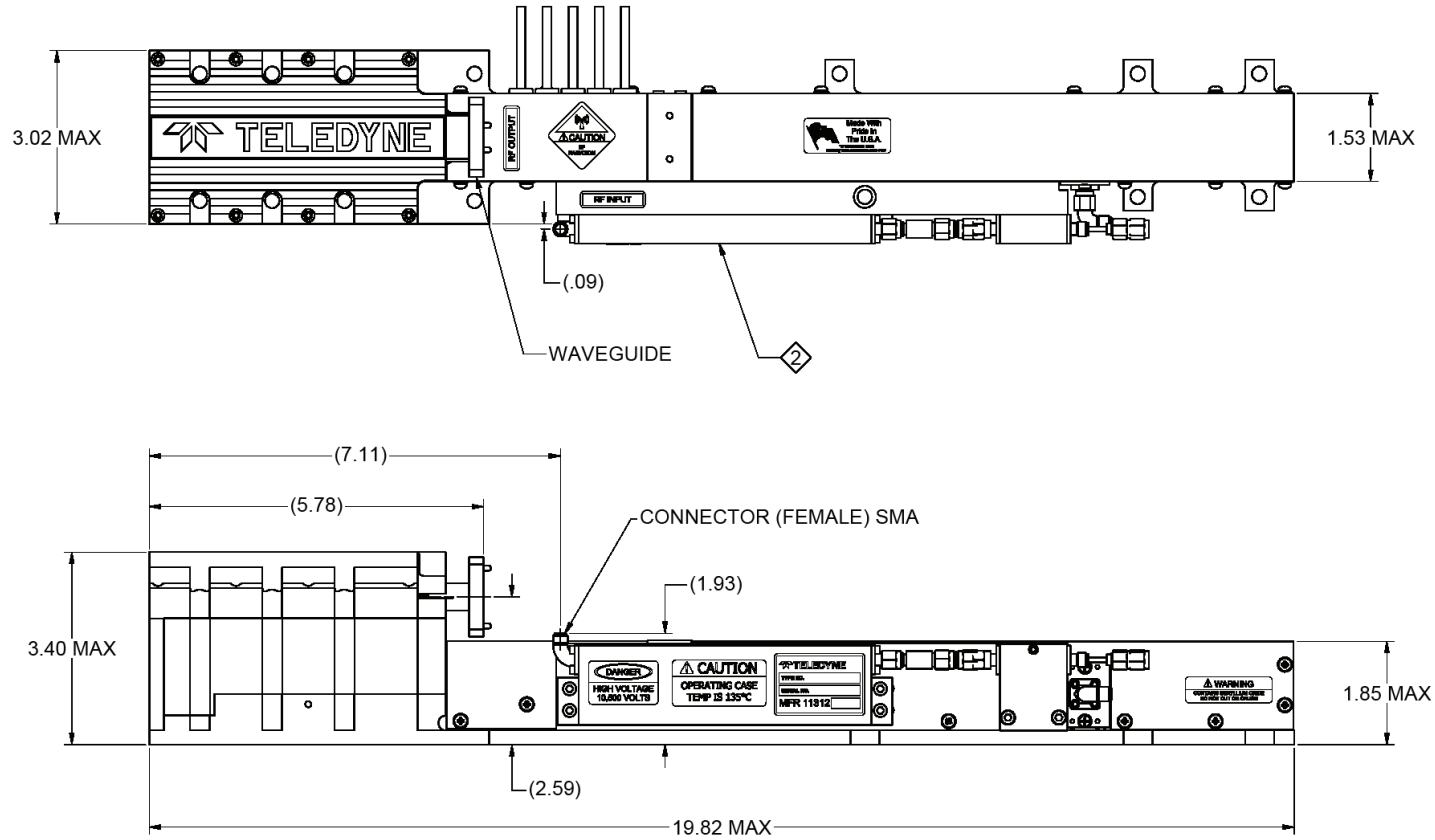
Performance	Typical	Spec
Input VSWR.....	2:1	2.5:1
Output VSWR.....	2:1	2.25:1
Max. Duty	—	CW
FE Capacitance.....	50 pF	65 pF
Grid Capacitance.....	37 pF	50 pF
Min. Harmonic Separation.....	-7 dBc	-5 dBc
Noise Power Density (dBm/MHz)	-15	-10
Prime Power.....	1221 W	1400 W

This model number is controlled by the International Traffic in Arms Regulations, and can only be exported via a U.S. Department of State export license. They may not be transferred, transshipped on a non-continuous voyage, or otherwise be disposed of in any other country, either in their original form or after being incorporated into other end-items, without the prior written approval of the U.S. Department of State.

NOTES:

1. THERMOSTAT OPTIONS: N/C OR N/O

◻ EQUALIZER OPTIONAL BASED UPON CUSTOMER REQUIREMENT.



SUBJECT TO CHANGE W/O NOTICE

ISO 9001:2008 Registered

TELEDYNE MICROWAVE SOLUTIONS TWT PRODUCTS <small>11361 Sunrise Park Dr., Rancho Cordova, CA (916) 638-3344</small>	
TITLE	MEC 5405, MEC 5406, MEC 5407, MEC 5408, MEC 5409, MEC 5410, MEC 5411, MEC 5412, MEC 5413, MEC 5414, MEC 5415, MEC 5416, MEC 5419, MEC 5420, MEC 5421, MEC 5422, MEC 5423, MEC 5424

This model number is controlled by the International Traffic in Arms Regulations, and can only be exported via a U.S. Department of State export license. They may not be transferred, transshipped on a non-continuous voyage, or otherwise be disposed of in any other country, either in their original form or after being incorporated into other end-items, without the prior written approval of the U.S. Department of State.



Teledyne TWT Products • 11361 Sunrise Park Drive • Rancho Cordova, CA 95742 • 916.638.3344 • www.teledynemicrowave.com

6.5 GHz – 18.0 GHz Continuous Wave TWT • MEC 5411/MEC 5412