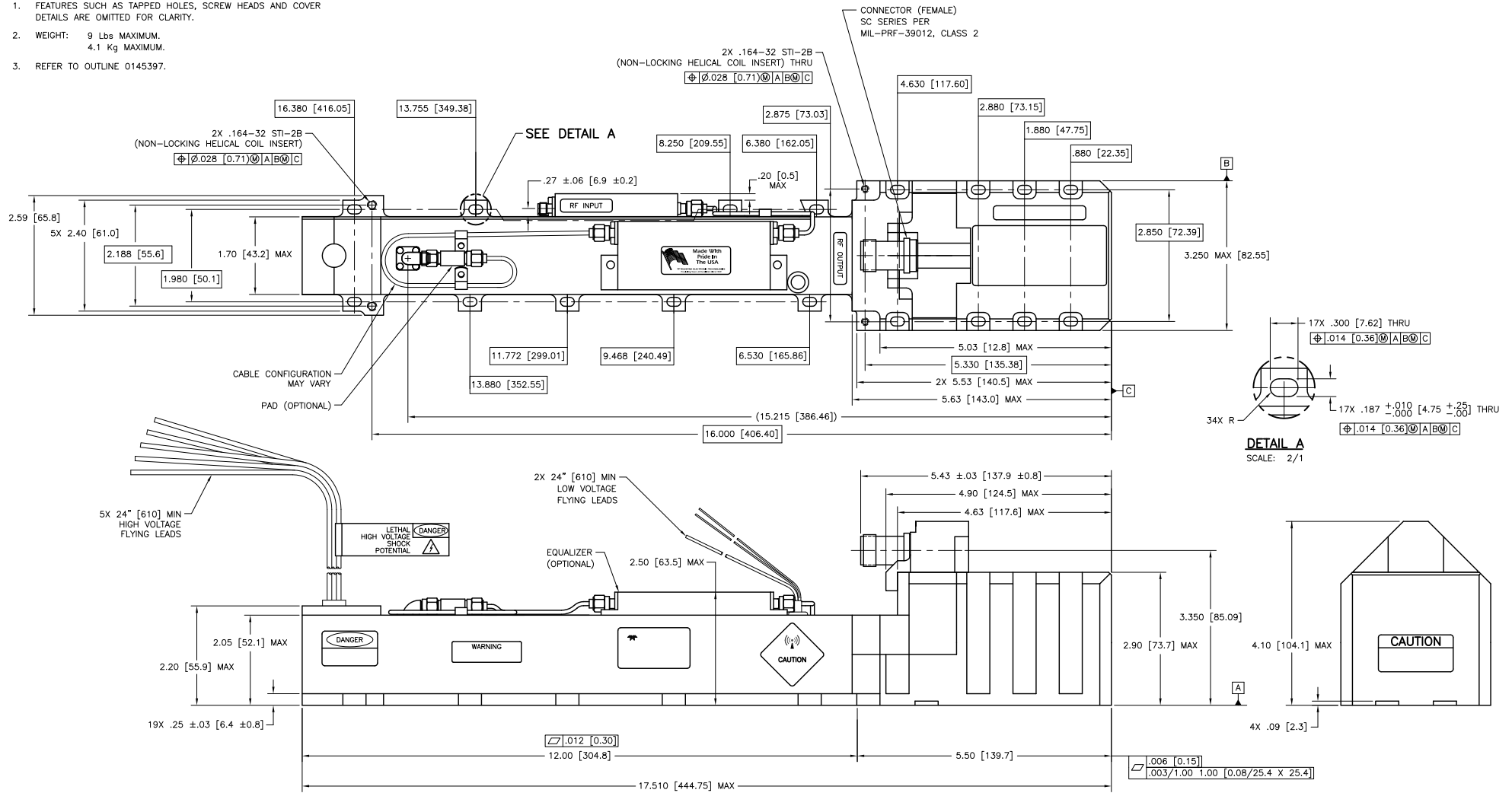


NOTES:

1. FEATURES SUCH AS TAPPED HOLES, SCREW HEADS AND COVER DETAILS ARE OMITTED FOR CLARITY.
2. WEIGHT: 9 Lbs MAXIMUM.  
4.1 Kg MAXIMUM.
3. REFER TO OUTLINE 0145397.



HIGH VOLTAGE CONNECTIONS		
PIN	FUNCTION	COLOR
1	CATHODE	YELLOW
2	HEATER	BROWN
3	GRID	GREEN
4	COLLECTOR 1	RED
5	COLLECTOR 2	WHITE

LOW VOLTAGE CONNECTIONS		
FUNCTION	COLOR	
HELIX/GROUND	BLACK	
THERMOSTAT (NC)	TWIN GRAY	

SUBJECT TO CHANGE W/O NOTICE

ISO 9001:2000 Registered

<p>DO NOT SCALE DRAWING</p> <p>UNLESS OTHERWISE NOTED</p> <p>DIMENSIONS ARE IN INCHES</p> <p>TOLERANCES ON DECIMALS ANGLES</p> <p>XX <math>\pm .02</math> XXX <math>\pm .005</math> <math>\pm 2^\circ</math></p> <p>REMOVE ALL BURRS AND SHARP EDGES</p> <p>SURFACE ROUGHNESS PER ASA B46.1</p> <p>DIM AND TOL IN INCHES</p> <p>ASME Y14.5M - 1994</p>	<p><b>TELEDYNE MEC</b></p> <p>11361 Sunrise Park Dr., Rancho Cordova, CA (916) 638-3344</p> <p>TITLE</p> <p><b>OUTLINE DRAWING</b></p> <p><b>MEC 5497</b></p>
--	---