

NOTES:

1. FEATURES SUCH AS TAPPED HOLES, SCREW HEADS AND COVER DETAILS ARE OMITTED FOR CLARITY.
2. WEIGHT: 21.0 Lbs MAXIMUM.
9.6 Kg MAXIMUM.
3. OPTIONAL (N.C./N.O.)
4. REFER TO OUTLINE 146166.



5X 24.0 ± 1.0 [610 ± 25]
HIGH VOLTAGE
FLYING LEADS

5X 3.07
[78.0]
MAX

LETHAL
HIGH VOLTAGE
SHOCK
POTENTIAL

.015 ± .060 [0.38 ± 1.52]

CONNECTOR (FEMALE) FOR
TYPE N SERIES COUPLING PER
MIL-PRF-39012, CLASS 2

8X $\varnothing.250 \pm_{-.000}^{+.005}$ [6.35 $\pm_{-.00}^{+.13}$] THRU
FROM OPP SIDE
 $\checkmark \varnothing.398 \pm_{-.000}^{+.010}$ x 100°
 $\varnothing.014$ [0.36] (M) A B

14X .164-32 CAPTIVE SCREW ASSY (OPTIONAL)
TRIDAIR #C28080C08-8HS W/TRIDAIR RETAINER
NUT #CA28085-3-2

2.80 [71.1] MAX

RF INPUT
1.40 ± .06
[35.6 ± 1.5]

2X 24.0 ± 1.0 [610 ± 25]
LOW VOLTAGE
FLYING LEADS

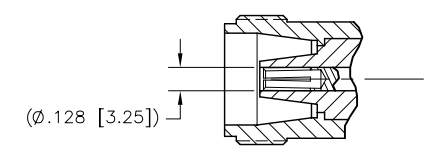
3.85 ± .06 [97.8 ± 1.5]

8X .25 ± .03 [6.4 ± 0.8]

14X .25 ± .05 [6.4 ± 1.3]

22.94 ± .25 [582.7 ± 6.4]

28.00 [711.2] MAX



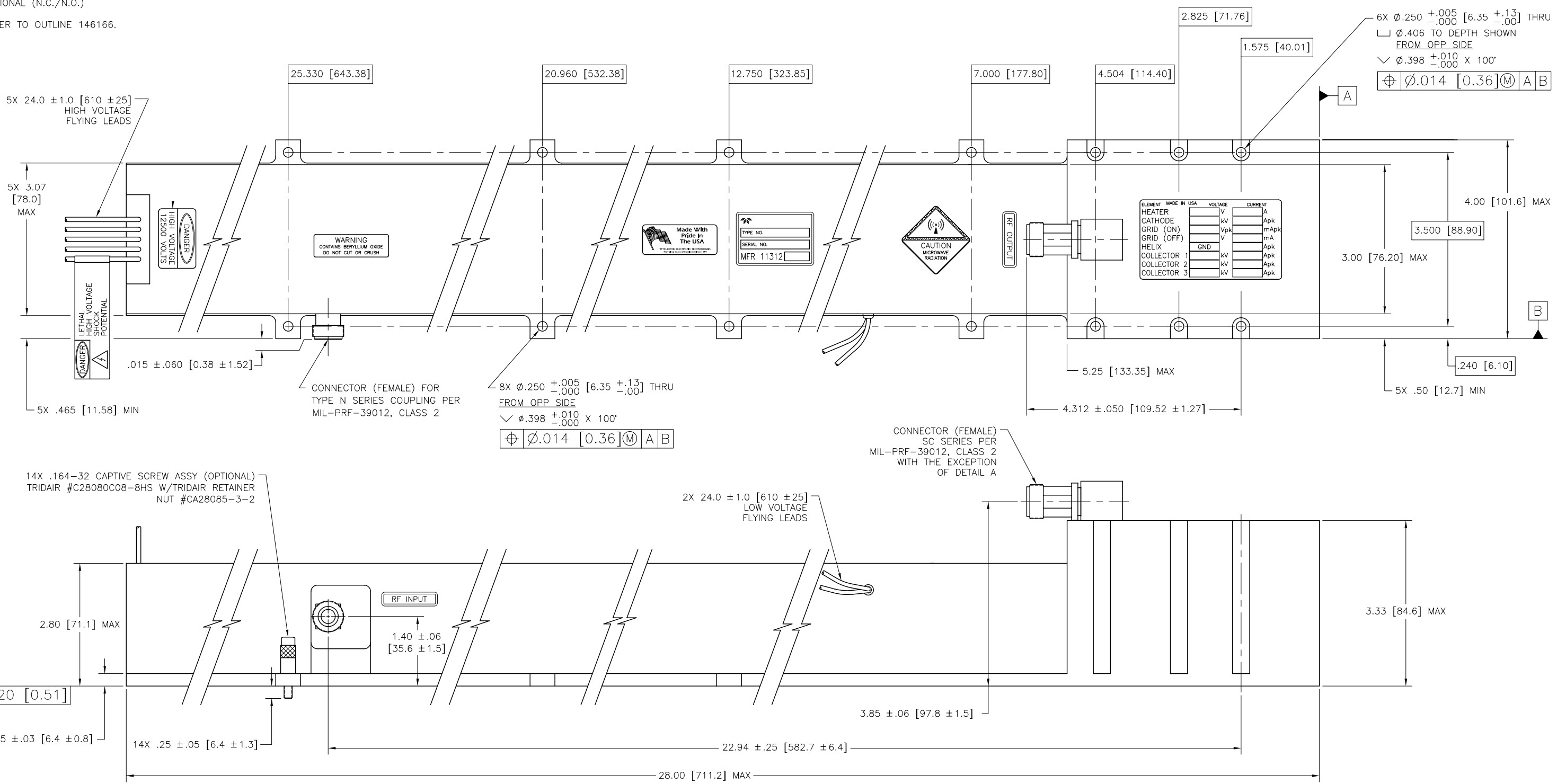
DETAIL A
SCALE: 2/1

HIGH VOLTAGE CONNECTIONS	
FUNCTION	COLOR
HEATER	BROWN
CATHODE	YELLOW
GRID	GREEN
COLLECTOR #1	RED
COLLECTOR #2	WHITE

LOW VOLTAGE CONNECTIONS	
FUNCTION	COLOR
HELIX/GROUND	BLACK
THERMOSTAT	GRAY

SUBJECT TO CHANGE W/O NOTICE

ISO 9001:2000 Registered



ELEMENT	MADE IN USA	VOLTAGE	CURRENT
HEATER		V	A
CATHODE		kV	mA
GRID (ON)		Vpk	mA
GRID (OFF)		V	mA
HELIX		GND	Apk
COLLECTOR 1		kV	Apk
COLLECTOR 2		kV	Apk
COLLECTOR 3		kV	Apk

DO NOT SCALE DRAWING
UNLESS OTHERWISE NOTED
DIMENSIONS ARE IN INCHES
TOLERANCES ON
DECIMALS ANGLES
.XX ± .02 .XXX ± .005 ± 2°
REMOVE ALL BURRS AND
SHARP EDGES
SURFACE ROUGHNESS PER
ASA B46.1
DIM AND TOL IAW
ASME Y14.5M - 1994

TELEDYNE MEC
11361 Sunrise Park Dr., Rancho Cordova, CA (916) 638-3344

TITLE
**OUTLINE DRAWING
MEC 3095**

01/04